

# COUGAR CALL OUT

★ HUNTERS CREEK ELEMENTARY ★

Stefanie Roach, Principal

2011-2012

November 28, 2011

## From the Principal

As we enter the month of December, I would like to take this opportunity to discuss the highlights of our Holiday Guidelines document created in the spring of 2005 by a Task Force comprised of HCE teachers, administrators and parents.



Our policy states that both instruction and materials presented to students during the month of December will derive from curriculum expectations described in the TEKS, Texas Essential Knowledge and Skills. Banners will be hung without supporting the beliefs of any particular religion. Religious symbols will be displayed on a temporary basis to serve an educational purpose. Music will be presented to emphasize cultural traditions and practices. Classroom lessons and activities will support an awareness and understanding of various beliefs associated with a variety of religions and cultures. Hunters Creek staff members will not sponsor religious devotions or religious celebrations. More specific information related to the HCE Guidelines can be accessed on our website.

Our goal for the month is to focus on universal themes relevant to many nations and peoples; those being of harmony, peace and kindness in the world among all individuals.

## Calendar

- 11/29 8:30 am PTA mtg @ DC
- 12/1 Classroom Spelling Bee
- 12/8 6 pm Choir Program
- 12/13 JA Biztown– 5th grade
- 12/15 8:30 Kinder Holiday Program
- 12/16 8:30-10:15 Sign-Along  
11:00 Holiday Parties  
Noon Early Dismissal
- 1/4 Students return to school
- 1/6 Report Cards go home
- 1/16 MLK Day– Student Holiday
- 1/19 Spelling Bee
- 1/20 Staff Appreciation Lunch
- 1/31 PTA Mtg. @ 6pm -Stephanie Carr's Home
- 2/1 100th Day of School
- 2/3 Progress Reports go Home



**"POUNCE!" ON THIS!**

Tonight when you get home, Ask your parents if you can get on a computer, laptop, or other device with internet. Then, type in at the top:

<http://cougarpress.weebly.com/>

We (the fifth graders of The Cougar Press) very much encourage *all students* to feel free to explore our 100% safe "school news" website featuring games, polls, contests, and more! Ask librarian Mrs. Moore for more information! :)

LIFESKILL

**Responsibility**

To respond when appropriate, to be accountable for your actions



## President's Perspective

I hope everyone had a some good grub over Thanksgiving & enjoyed the long weekend!! First off, I would like to thank the Loyd Family for making our Red Ribbon Week so special by sponsoring the two Clutch Rallies!! The kids had a blast.

Next, our bigger than Texas budget has not only been met by your generosity through Write-a-Check Campaign and the hard work of our auction chairs, but it has been exceeded!! I encourage all of our committee chairs who had their budgets cut or parents with any great ideas for our wonderful campus to come to the next Planning Meeting with proposals! Please contact Allison Daughtry (allison@alandaughtrylaw.com) if you would like to be added to the agenda. The next meeting will be held on January 17 at 8:30. **Please come to the PTA Meeting on Tuesday, November 29** (yep, tomorrow) for more information.

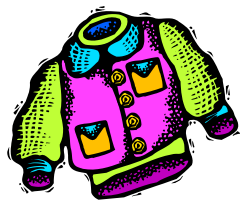
As a reminder, please be courteous during pick up and do not park in areas that impede the line of sight of our cute buckaroos and other cars seeing them as they walk home. Specifically, do not park along Beinhorn in the grass or along the white-striped curbs on Storywood. Thanks for helping to keep our kids safe!!

Happy Trails!

*Mindy Voyles*

**PTA Prsident  
2011-2012**

## HCE Policy Corner



**Lost and Found:** Lost and found items are kept just outside the cafeteria door in a designated box. If you do not find your article there, please check with the office personnel and/or custodians. The recommendation is to label all clothing items with the child's name. Students are encouraged to keep expensive, personal items at home and should carefully guard their possessions while on school grounds. Bicycles should be chained and locked to the bike rack to keep them secure during the school day. HCE and SBISD are not responsible for lost or stolen items. Unclaimed items will be donated to charity at mid-year and at the end of the school year.



## BIKE SAFETY

Bike riding is a great way to get exercise and fresh air and share time as a family. But before you and the kids rush out and start pedaling, there's an important factor that you need to consider — safety.

**Here are a few basic safety rules to review with your children:**

- ★ Wear a helmet.
- ★ Stop at all stop signs; obey traffic lights and crossing guards.
- ★ Always ride in the same direction as cars do. Never ride against traffic.
- ★ Always stop and check for traffic in both directions when leaving a driveway or a curb.
- ★ Watch traffic closely for turning cars or cars leaving driveways.
- ★ Always walk a bike across intersections using the crosswalk and following traffic signals.
- ★ When riding in a group, always ride single file on the street.



**For more information on bike riding and safety visit: [www.kidshealth.org](http://www.kidshealth.org)**

## **Campus Improvement Team Minutes**

### **November 17, 2011**

Members Present: Kristina Sadlo, Omi Ford, Angie Puskac, Monica Moussighi, Todd Dixon, Denise Cartwright, Carrie Sturges, Mercedes Mulvey, Sally Russell, Stefanie Roach, Belinda Henry

Guests: Allison Daughtry, PTA President

1. TRIBES activity – Ms. Henry led the group in a team building TRIBES activity.
2. Staffing – Since the beginning of the year the following additional grade levels have been added: Kinder, 2nd, and 4th. Most recently a 1st grade teacher was placed on leave and will not be returning to Hunters Creek. All decisions are made in the best interest of children. Veronica Contreras is our new 1st grade teacher. Ms. Contreras has taught 2nd grade for four years in the Austin area. She is a graduate of Spring Branch schools. Ms. Contreras began the school year as a teacher assistant generously paid for by PTA. We are in the process of filling the vacant teacher assistant position. Once confirmation is received from Human Resources an announcement will be made regarding the individual who has been selected to fill the opening. Until that time, there will be a substitute in place.
3. Playground area – The district has removed many of the dead pine trees in the field area and playground area. A group of parents including Homeowners in the neighborhood are working on replacing the trees. A CIT subcommittee was formed to make decisions regarding the playground area and improvements. The committee will then present a proposal to the PTA. Those members volunteering to serve on the committee include: Stefanie Roach, Monica Moussighi, Denise Cartwright, Mindy Voyles, and a teacher representative will be included as well.
3. Holiday Guidelines – In 2005 an HCE task force was created to develop Holiday guidelines in an effort to recognize and respect all traditions. The guidelines were reviewed during the meeting. Mrs. Roach will publish portions of the guidelines in an upcoming newsletter as well as review with team leaders. The committee did not recommend making any changes to the current outlined policies.
4. SBISD 5 year plan – Mrs. Roach gave each CIT member a copy of the Findings and Directions document that helped SBISD develop the draft form of the new 5 year plan. Each CIT member was asked to review and provide feedback and/or contributions to Mrs. Roach.
5. Next meeting – January 19, 2012

The CIT meeting adjourned at 4:15 p.m.



# Saddle Up For Spelling!

Howdy Word Wranglers!

## Morning Practice Sessions

Mark your calendars--practice sessions started on Friday, November 18, and there was another one on Monday, November 21, but there are still **4** more morning practice sessions to help the students prepare for the classroom bees. These will be held from 7:30-7:55 a.m. as follows:

(NOTE: 3<sup>rd</sup> graders practice in the **Discovery Center**; 4<sup>th</sup>/5<sup>th</sup> graders practice in the **Library**)

Tuesday, November 22

Level Two (Greek)

Monday, November 28

Level Three words (Frequently Misspelled Words)

Tuesday, November 29

All word levels and/or a practice bee

Wednesday, November 30

All word levels and/or a practice bee

If your speller is planning on attending any of these practice sessions, please complete the form included in this newsletter and send it back to school *as soon as possible* so that we have some idea of how many spellers to expect at the practice sessions.

Also, don't forget the logo design contest! You may use the form included in this newsletter to enter the contest.

Last but not least, we need volunteers to assist with word calling at these sessions.

Please contact Alison Hickey at [tokyoalison@yahoo.com](mailto:tokyoalison@yahoo.com) if you are interested. No experience needed, just a nice clear reading voice and plenty of enthusiasm! Please let us know if you have any questions.

Your Spelling Bee Committee,

Wendy Koy, Lina Jorgensen, Alison Hickey

Roberta Smiley, coach

(Your part to keep...)

**What:** Spelling Bee Practice Sessions

**When:** Every day that school is in session starting at 7:30 a.m. before school on Friday, November 18, 2011 through Wednesday, November 30, 2011

**Where:** 3<sup>rd</sup> grade – **Discovery Center**  
4<sup>th</sup> & 5<sup>th</sup> grades – **Library**

**Mandatory:** No

**Contact person:** Alison Hickey at [tokyoalison@yahoo.com](mailto:tokyoalison@yahoo.com)

(Cut here and turn in lower section)

**Permission Slip--Classroom Spelling Bee Practice Sessions**

\_\_\_\_\_, a student in grade \_\_\_\_\_ at Hunters Creek  
Name Grade

Elementary School, has my permission to participate in: spelling bee practice sessions to be held at HCE  
(exact location varies) daily during regular school days starting at 7:30 a.m. before school on Friday, November 18, 2011 through Wednesday, November 30, 2011

\_\_\_\_\_  
Signature of Parent/Guardian Date  
\_\_\_\_\_  
Printed Name of Parent/Guardian Home Phone Number  
\_\_\_\_\_  
E-mail address(es) homeroom teacher

Would you be interested in helping students practice their words? (circle one) **Yes No**

*If you marked "Yes," which days would you like to help? Circle as many as applicable.*

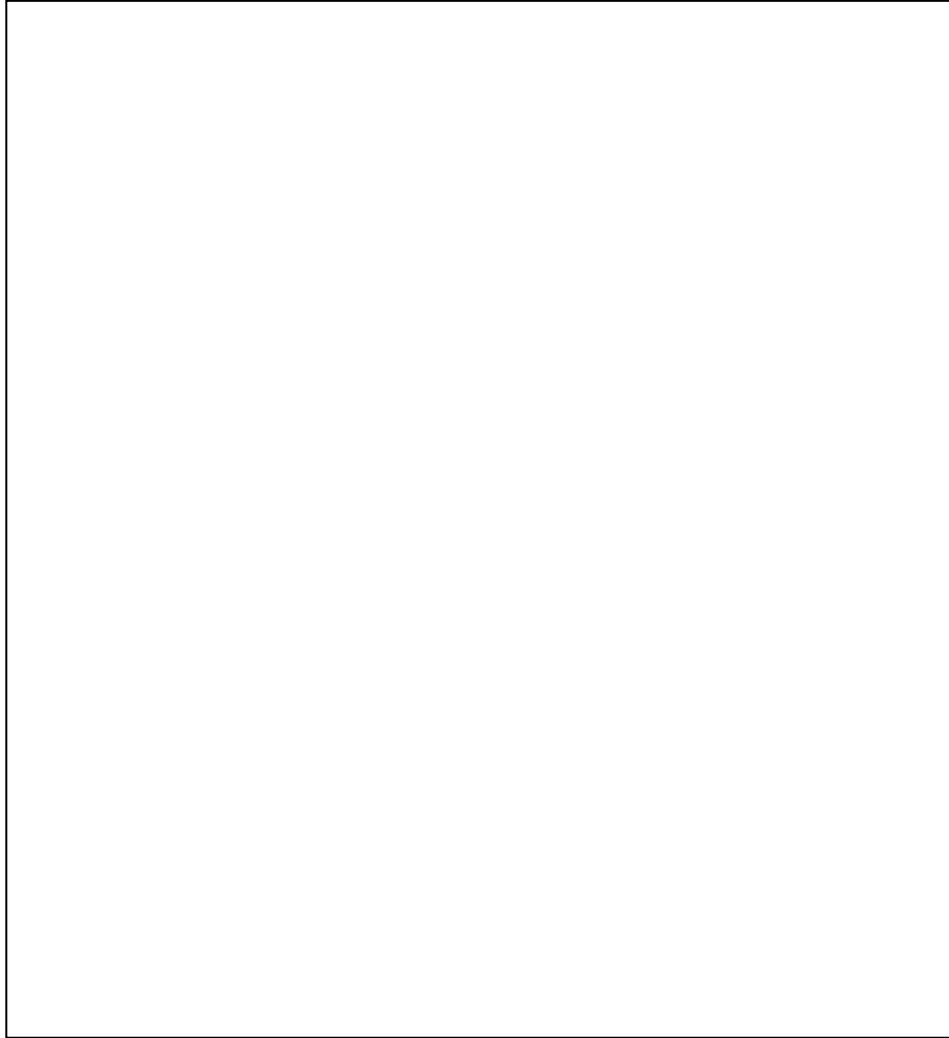
**Fri., 11/18 Mon., 11/21 Tues., 11/22 Mon., 11/28 Tues., 11/29 Wed., 11/30**

Please return the bottom part of this completed form to your child's teacher or the school office as soon as possible; keep the top part for your records.

**Questions?**

**Contact:** Alison Hickey at [tokyoalison@yahoo.com](mailto:tokyoalison@yahoo.com)

# DESIGN THE SPELLING BEE LOGO



We invite each 3<sup>rd</sup>, 4<sup>th</sup>, and 5<sup>th</sup> grade student to participate in a contest to design a logo for the Hunters Creek Spelling Bee. Our theme this year is:

**“Saddle Up for Spelling”**

Please fit your design in the 5” x 5” box provided above. The design should be drawn in **black ink** and may have **one** color. We will choose a winning design from all entries. The design will be used on the Bee T-shirt and on the Bee program cover. Please put your entry in the Spelling Bee box in the office. Entries should be received by **Wednesday, December 7th**.

Questions? E-mail Wendy Koy at [deanandwendy@sbcglobal.net](mailto:deanandwendy@sbcglobal.net)

Name: \_\_\_\_\_

Grade: \_\_\_\_\_ Teacher: \_\_\_\_\_



## Brownies TROOP 18971 - SPCA Donation Drive

Do you own a pet or like animals? Did you know that our local SPCA provides services to more than 100,000 animals a year? Do you want to help support our local SPCA and our Troop?

This year, Brownies troop 18971 has decided to help the Houston SPCA as our community service project. We have kicked off an "SPCA Donation Drive" from **now thru November 28<sup>th</sup>**. Please look for our signs around campus and give items the SPCA has requested. Place donated items in the marked boxes around campus. The SPCA 'wish list' includes:

Cat Litter (Non-clumping)                      Fabric Toilet Seat Covers (for cat beds)  
Fresh Greens and Lettuce (not iceberg) for rabbits      Pet Grooming Supplies  
Hamster, Mice, Ferret, Gerbil, Rabbit, Guinea Pig Food  
Pet Toys - Cats and Dogs                      Rabbit Litter (Yesterday's Newspapers)  
Halters, Horse Blankets & Lead Ropes              Cat Toys  
Digital Cameras                      Small, medium & large food trays (Nacho Tray)  
Old Newspapers                      Can Openers  
Hand Sanitizers                      Towels and Blankets  
Bleach                      Batteries (AA, AAA, C, D, 9V)  
Cotton Swabs and Cotton Balls                      Disposable Rubber Gloves  
8 ½ " X 11" copy paper, white and any color              Large plastic watering cans  
Paper Towels                      Gallon Sized Ziplocked Bags  
Office supplies (scissors, tape, pens, black & red sharpies, etc.)  
Play Pens/Dogs & Cat Beds/Baby Gates

Thanks for supporting the pet member of your family and our troop!

Troop 18971 Girls: Andie, Ariana, Bailey, Cameron K., Cameron V., Carina, Cate, Celeste, Elise, Ellie, Emeline, Grace, Joanie, Jennie, Kallie, Karen, Kelly, Lauren, Lexie, Madeline, Molly, Parker, Reese, Sloan, Sophia, Sydney

Spring Branch Education Foundation &  
the Altharetta Yeargin Art Museum  
will help you with your Christmas Shopping

Holiday Shopping just got easier!  
The Spring Branch Education Foundation(SBEF) the  
the Altharetta Yeargin Art Museum(AYAM) have  
teamed up to help you with just the right gift for folks  
on your holiday list. **They are offering cards that will  
let the recipient know that a donation has been  
made in his or her honor.**

*The proceeds benefit the SBEF and AYAM with  
donations being tax deductible.* These are great  
ways to honor teachers, friends and co-workers.  
There are five designs that were selected from  
student artwork.



Please go to the link to see how you can order and get your  
shopping done early.

<http://shop.springbraneducationfoundation.com/>

**To Submit a Newsletter Article**

Write your article as a **Microsoft Word** document and **e-mail** it to **all 5** newsletter editors at:

- |  |              |
|--|--------------|
| <a href="mailto:rdemoes@comcast.net">rdemoes@comcast.net</a>                 | 281-381-6545 |
| <a href="mailto:rwrite2@comcast.net">rwrite2@comcast.net</a>                 | 713-647-8444 |
| <a href="mailto:gkarathanos@att.net">gkarathanos@att.net</a>                 | 281-813-5937 |
| <a href="mailto:rhondadavisonmetz@yahoo.com">rhondadavisonmetz@yahoo.com</a> | 713-410-5408 |
| <a href="mailto:sassydesignsinc@gmail.com">sassydesignsinc@gmail.com</a>     | 713-906-1289 |



**From the Editor**

You should then **receive a response** from the editor who is responsible for that week. **If you do not  
get a response, please call** one of us to make sure your article will be included! The  
**DEADLINE** for submitting articles is every **WEDNESDAY AT 10:00 AM**. Articles will be accepted  
**ONLY** by e-mail. If you have any questions, please call any one. of us!